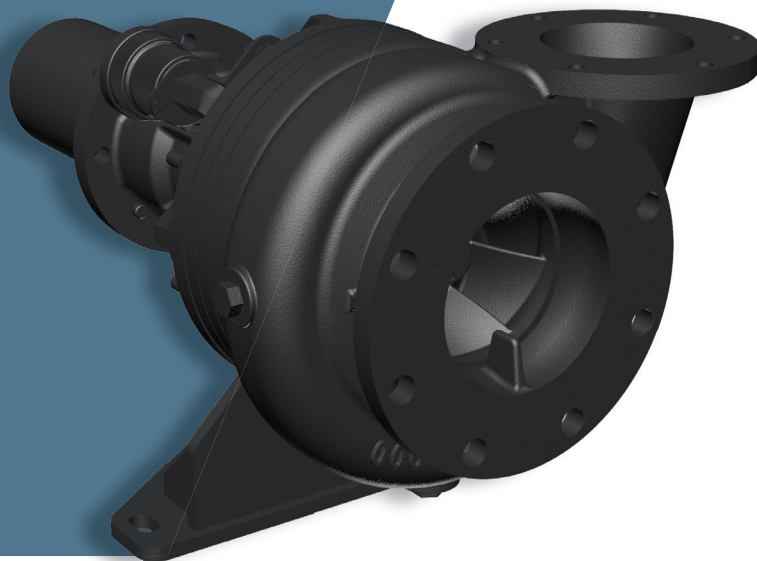




SILVERBACK PRESSURIZER PUMP



Built to Last. Ready to Run.

The **Silverback 5x6x9 Pressurizer Pump** is a high-performance centrifugal solution purpose-built for coiled tubing and acidizing operations. Designed for long life and low maintenance, this pump delivers consistent pressure and high flow, all while minimizing non-productive time. It offers a true plug-and-play upgrade that enhances field reliability without requiring equipment modifications. Whether you're circulating produced water, brines, or handling limited acid exposure, the Silverback 5x6 gives you the uptime advantage, run after run.



SEAMLESS DROP-IN COMPATIBILITY

Matches common 5x6 pump footprints for fast, no-modification replacements.

HIGHLY-EFFICIENT HYDRAULIC DESIGN

Fully enclosed impeller delivers smoother flow with lower NPSHr.

BUILT FOR HARSH FLUIDS

Duplex stainless components resist corrosion and extend pump life.

LEAK-FREE DYNAMIC SEALING

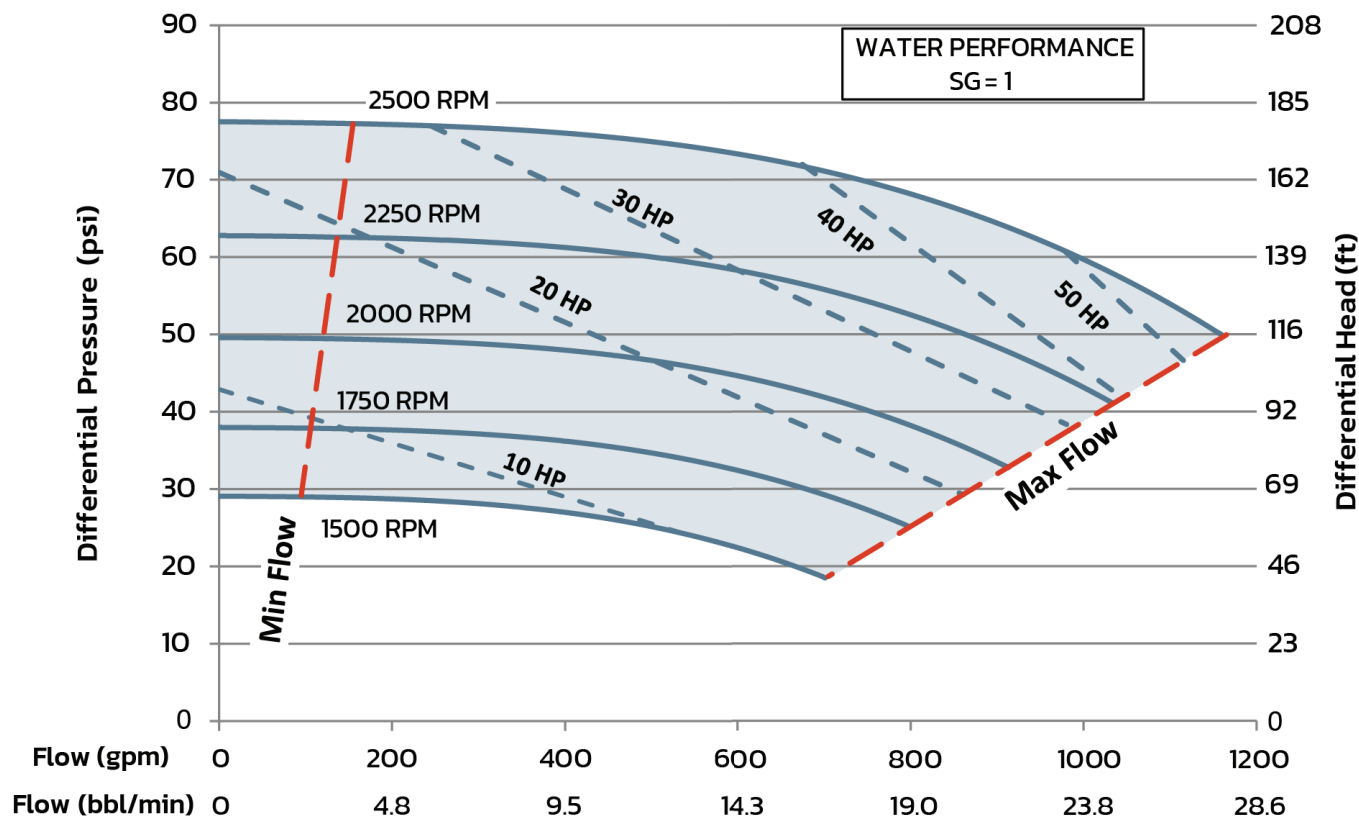
Expeller system prevents leakage during operation and avoids seal failure.

SIMPLIFIED HYDRAULIC DRIVE

Internal flexible coupling eliminates bearing issues and reduces spline damage, commonly found with hydraulic drives.

Engineered for efficiency. Built for field realities.

Silverback-PR 5x6x9 - DYNAMIC SEAL - PERFORMANCE CURVE



Technical Performance

MAXIMUM ALLOWABLE WORKING PRESSURE: 125 PSI

MAXIMUM SPEED: 2,500 RPM

DROP-IN REPLACEMENT FOR: 5X6X9

END OF CURVE POWER REQUIREMENT: 53 HP

END OF CURVE FLOW RATE AT 2500 RPM: 1,150 GPM

Typical Uses

COILED TUBING SUPPORT UNITS

Dependable pressurization for produced water, brine, and treatment fluids.

ACIDIZING UNITS

Compatible with intermittent exposure to hydrochloric acid up to 28%.

WELL INTERVENTION SUPPORT

A field-tested performer across a variety of pressure pumping applications.

BUILT STRONGER TO LAST LONGER

CONTACT

825-413-5747

sales@ipumps.com